



# Delaware Board of Clinical Social Work Examiners

FALL 2006

Volume 1, Number 1

## In This Issue

- Online License Verifications
- Change Contact Information Online
- Welcome New Licensed Clinical Social Workers
- Continuation of License – Military Deployment
- Voluntary Treatment Option Program

## Board Members

Gloria Ho-Ruggiero  
Professional Member  
President

Timothy Toole  
Professional Member  
Vice President

Ralph Robinson  
Professional Member  
Secretary

Winnie Lewis  
Public Member

Robb Carter  
Public Member

Danna Levy  
Public Member

Vacancy  
Professional Member

Contact the board

## Continuing Education Highlights

As of December 11, 2004, the Delaware Board of Clinical Social Work Examiners discontinued pre-approving continuing education courses.

The Board will accept for continuing education credit all courses designated for clinical social workers which are offered by providers who are approved by the Association of Social Work Boards (ASWB), the National Association of Social Work (NASW), the Clinical Social Work Association (CSWA) and the American Psychological Association (APA).

In addition, there is no longer a Category I and Category II requirement. Licensees are required to complete 45 hours of continuing education (CE) which includes 3 hours in ethics.

For the license period beginning February 1, 2007, licensees can obtain their CE between February 1, 2007 and January 31, 2009. **For the license period ending January 31, 2006 licensees will have the choice of applying CE they obtained between November 1, 2006 and January 31, 2007 for the current renewal or for the next renewal period.**

You may read the entire Definition and Scope of Continuing Education requirements by visiting our website and clicking on [Rules and Regulations](#).

## Online License Renewals

**How will it work?** Several weeks before the 1/31/2007 deadline, you will receive a postcard from the Division of Professional Regulation. This postcard will be your only renewal notice. You will then be able to go to the Division's website, log on to Online License Services and renew online. To renew online, you must pay the renewal fee by credit card.

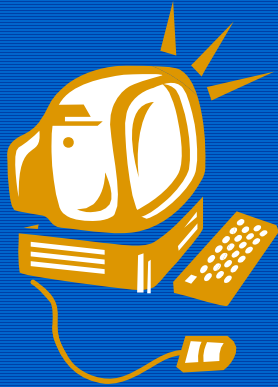
**What paperwork will I send in?** When you renew online, no paperwork is required. You will attest electronically that you have completed your continuing education (CE) requirement.

**What if I do not have access to the internet?** You may call the number on the postcard to request a paper renewal application to be mailed to the address on file with the Board.

**Will there be an audit?** Yes. After the renewal is over, the Board will conduct an audit of CE. Those randomly selected for audit will be required to submit certificates of completion of CE, along with brochures, agendas or outlines.

**Is it secure?** Yes. The Division's website uses the same security as your banking institution.

Click on this link to verify a license online



Click on this link to change contact information

Click here to view the Statewide Calendar

*"When you renew online, no paperwork is required. You will attest electronically that you have completed your continuing education requirements"*

---

## Online License Verifications

The Division of Professional Regulation has made several online services available to the public and its professional licensees. One new service is online license verifications. You can verify a licensee's name, license number, license type, license status, issue date, expiration date and public disciplines all from your computer 24 hours a day, 7 days a week.

To verify a license, simply visit the Division's website, click on [Verify License Online](#). You can search the licensee database by last name, license number, license type, county, city, state or zip code.

---

## Change Contact Information Online

Another service the Division of Professional Regulation now offers is the ability for a licensee to change his or her contact information online.

To change your contact information online, visit the Division of Regulation [website](#), and click on [Change Contact Information Online](#). After you register for a User ID and Password, you will be able to change your address, phone number and email address at your convenience.

---

## Welcome New Licensees

Since January 1, 2005 the board has licensed 80 clinical social workers. Of that number, 46 were candidates for the ASWB Clinical Examination. Congratulations to the following new LCSW's on passing the exam and gaining licensure in the State of Delaware!

Karen Oates  
Rebecca Raughley  
Lori Jones  
Frances Livingston  
Sachin Karnik  
Claudia Van Lenten  
Karen Mabry  
Lisa Beeman  
Madelyn Donald  
Marcia Lis  
Bobbi English  
Dorothy Perkel  
Angela Ramone  
Dora Temple  
Denise Crowley  
Allen ETTY  
Judith Jones  
Christine Caputo  
Carol Lovett  
April Lathbury  
Michelle McCann  
Bethany Hawkins-Parry  
Kelly Dobrowolski

Aimee McFarlan  
Barbara Ridge  
Kelly Bisaha  
Marjorie Wilson  
Aileen McCabe-Maucher  
Kristin Thomas  
Jeanette Southard  
Rodney Orders  
Shannon Bordley-Greene  
Kymberly Alvarado  
Courtney Breasure  
Adrienne Bey  
Paula Varrassi  
Nancy Gaddis  
Bettina Rubin  
Heather Mitchell  
Lanae Ampersand  
Meg Dominick  
Denise Kitson  
Megan Mayforth  
Ruth Black  
Kelly Hatton  
Michelle Reeve



---

## Continuation of License - Military Deployment

Senate Bill 206 was passed into law to protect active duty military, activated reservists or members of the National Guard from having their professional licenses or permits expire during active military deployments. Active duty military, activated reservists or members of the National Guard who qualify can have their professional licenses continue during active military deployments. The protection from license or permit expiration provided under this provision does not void or limit the obligations of a Qualifying Person to meet all requirements of licensure as required under the applicable statutory requirements for which the license or permit is sought. A Qualifying Person means a member of the Active Duty Military, National Guard or the military reserve who is deployed by the President of the United States or the Governor of this State.

---

## Voluntary Treatment Option Program (VTO)

The Delaware Board of Clinical Social Work Examiners is one of 27 boards within the Division of Professional Regulation that participates in the VTO Program. Eligible licensed clinical social workers with chemical dependency or impairment can access this confidential assistance program for treatment.

The program provides an alternative, non-disciplinary approach for licensees who have not committed an offense, other than the status of being chemically dependent or impaired, which would constitute grounds for discipline under Section 3907, of the Board of Clinical Social Workers statute.

A licensee can self-refer or a third party can refer confidentially. You can download an application and referral form at the Division of Professional Regulation's website at [www.dpr.delaware.gov](http://www.dpr.delaware.gov) and click on the Voluntary Treatment Option link.

### How does the process work?

- Submit an application/referral form to the Division of Professional Regulation.
- Complete an assessment with a licensed provider within 30 days of notification of eligibility.
- If treatment is recommended, meet with Division and Board designees to sign an agreement, which outlines treatment plan and practice limitations, if any.
- Access the prescribed level of treatment with licensed provider.

### Program Benefits

- Provides access to treatment for impaired professionals.
- Protects the public.
- Promotes early intervention.
- Enables the licensee to continue to practice provided they comply with the VTO agreement and do not commit any professional infractions.

You may contact the Program Coordinator at (302) 744-4503 or by email at [kay.warren@state.de.us](mailto:kay.warren@state.de.us) or contact the Board's VTO designee, Ralph Robinson, LCSW, through the Board's office at (302) 744-4534.